



INTEQ

Company : Nexus Energy

Well : Longtom-4

Interval : 87.00 - 2036.46 meters

Created : 03/Jul/2008 3:24:26 AM

## FORMATION EVALUATION LOG

### Chromatograph Data

Methane ppm

10 | 100 | 1000 | 10000

Ethane ppm

10 | 100 | 1000 | 10000

Propane ppm

10 | 100 | 1000 | 10000

iso-Butane ppm

10 | 100 | 1000 | 10000

n-Butane ppm

10 | 100 | 1000 | 10000

iso-Pentane ppm

10 | 100 | 1000 | 10000

n-Pentane ppm

10 | 100 | 1000 | 10000

Ditch Gas %

0.1 | 1 | 10 | 100

### Cuttings

MD meters 1:500

INTERPRETED  
LITHOLOGY

### Analysis

DIRECT FLUOR

### LITHOLOGY DESCRIPTIONS

RB1: 660mm (26")  
914mm (36") H/Opener  
Make: Reed  
Type: Rock/YC11  
Jets: 3x22, 1x16  
Depth In: 97.0 m  
Depth Out: 132.0 m  
Drilled 35.0 m in 2.6hrs  
Grade: 1-1-WT-A-0-I-NO-TD

Set 762mm (30") x 610mm  
(24") casing shoe at 128.86  
mMDRT

22/06/08

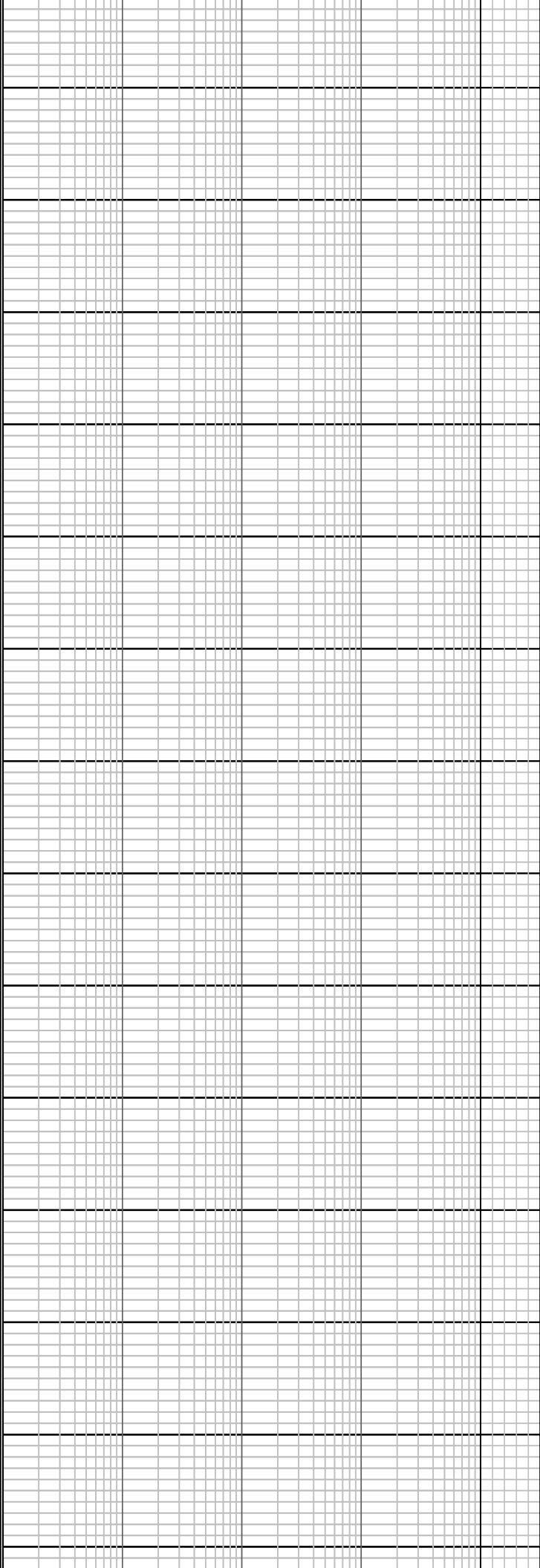
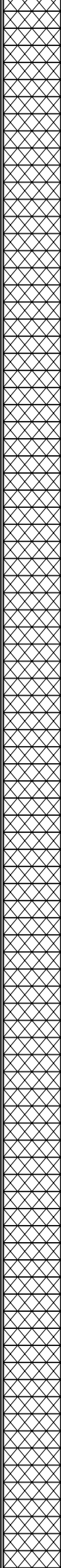
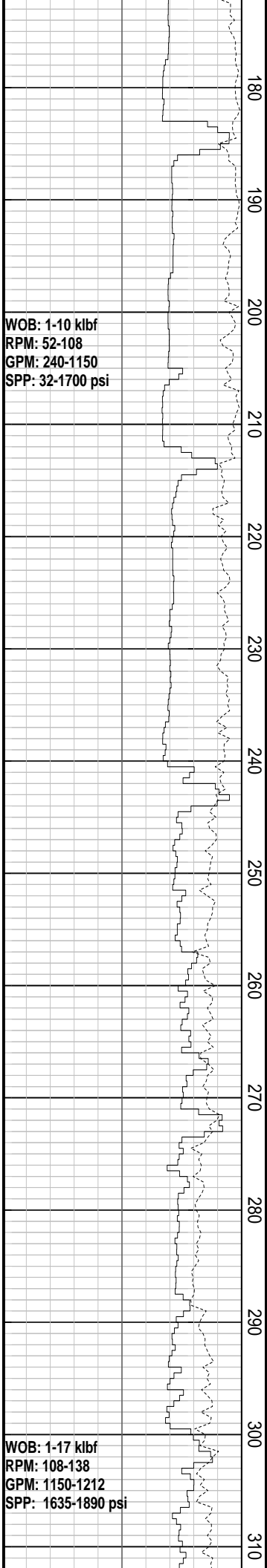
RB2: 559mm (22")  
Make: Smith  
Type: Rock/M23173  
Jets: 3x22, 1x15  
Depth In: 132.0 m  
Depth Out: 755.0 m  
Drilled 623.0 m in 26.8hrs  
Grade: 2-2-WT-A-1-I-NO-TD

RT-MSL: 39.9 mMDRT  
Water Depth: 57.1 mMDRT  
RT-Seabed: 97.0 mMDRT

Spud Longtom-4 @ 01:20 hrs  
on 21/06/08

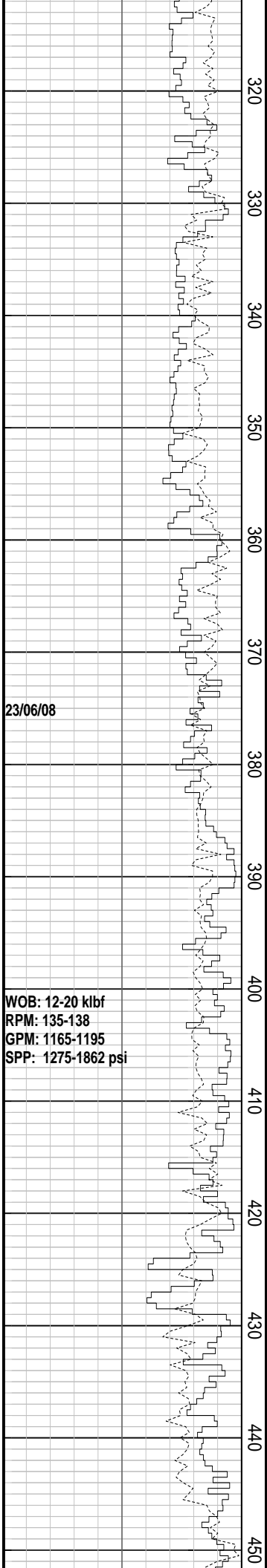
Drill with seawater & Hi-Vis sweeps.  
Returns to seabed 97.0m - 755.0m

Drill 36" hole section to  
132.0m

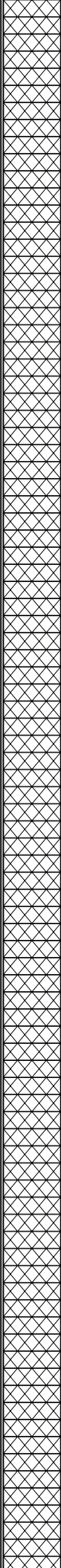


MD: 204.75 m    Azi: 355.69°  
TVD: 204.7 m    Incl: 0.52°

Drill with seawater & Hi-Vis sweeps.  
Returns to seabed 97.0m - 755.0m



320  
330  
340  
350  
360  
370  
380  
390  
400  
410  
420  
430  
440  
450



MD: 321.74 m    Azi: 145.66°  
TVD: 321.7 m    Incl: 2.44°

Drill with seawater & Hi-Vis sweeps.  
Returns to seabed 97.0m - 755.0m

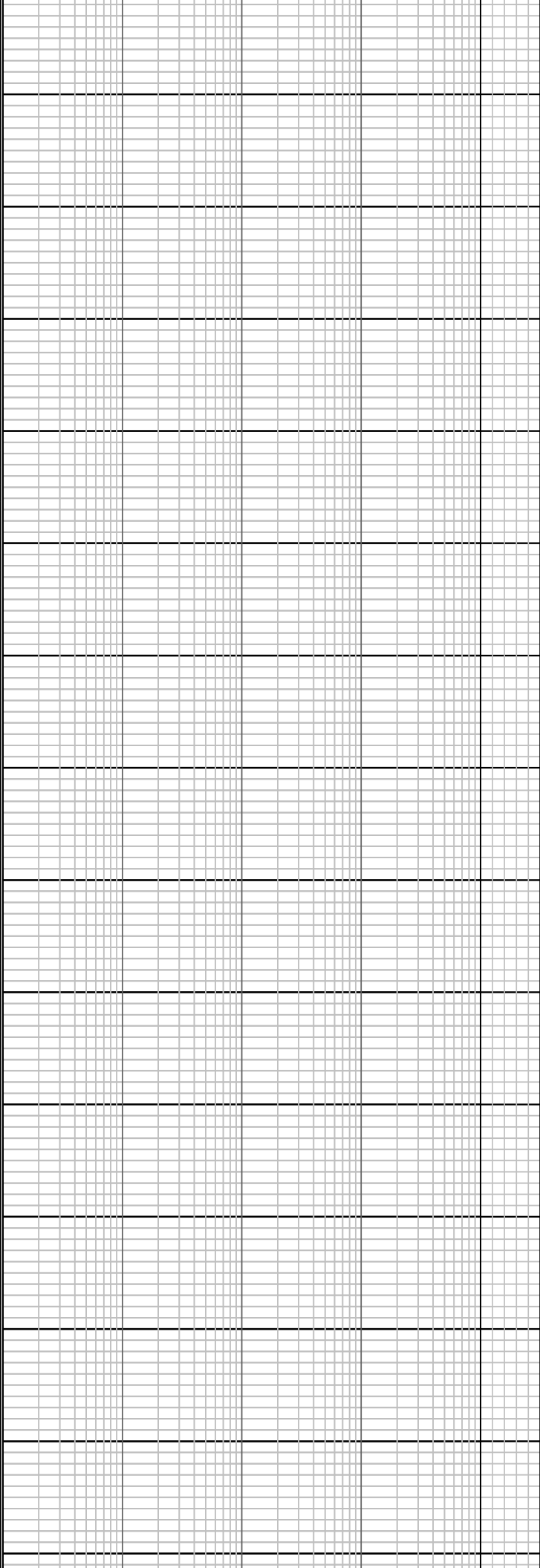
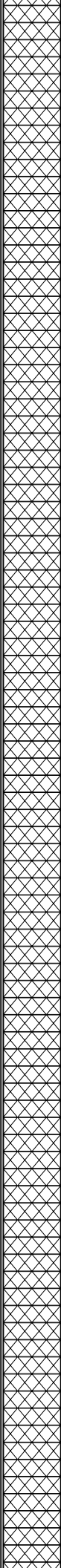
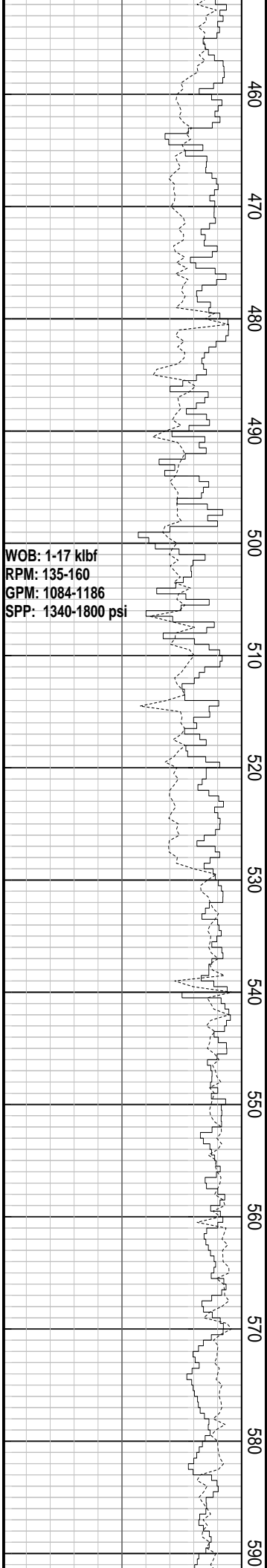
MD: 324.05 m    Azi: 189.14°  
TVD: 324.6 m    Incl: 0.78°

MD: 382.91 m    Azi: 326.57°  
TVD: 382.9 m    Incl: 0.23°

MD: 412.77 m    Azi: 250.06°  
TVD: 412.7 m    Incl: 0.34°

Drill with seawater & Hi-Vis sweeps.  
Returns to seabed 97.0m - 755.0m

MD: 442.90 m    Azi: 118.87°  
TVD: 442.9 m    Incl: 0.19°



Drill with seawater & Hi-Vis sweeps.  
Returns to seabed 97.0m - 755.0m

MD: 531.83 m	Azi: 328.15°
TVD: 531.8 m	Incl: 0.85°

MD: 563.30 m	Azi: 289.41°
TVD: 563.3 m	Incl: 0.97°

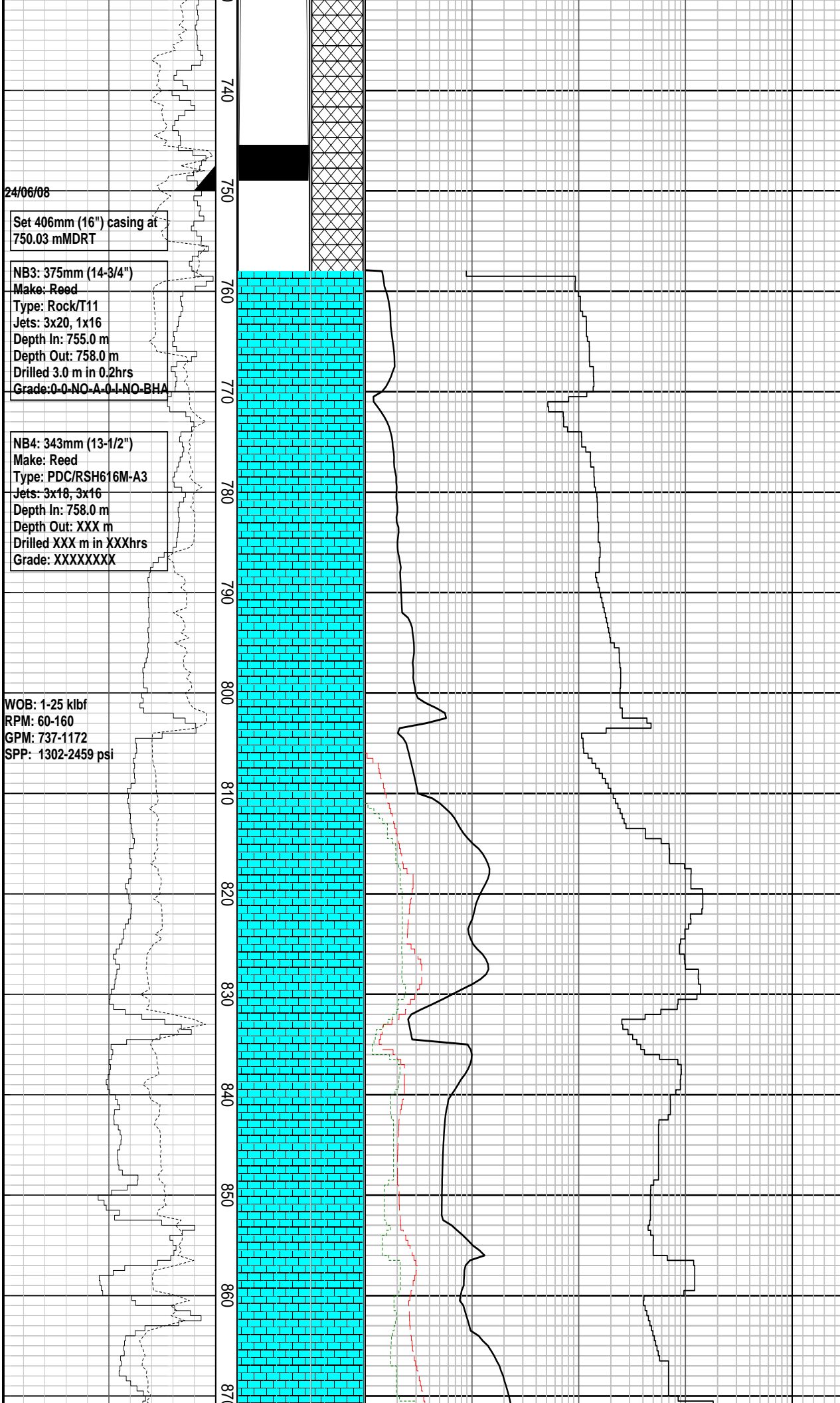
WOB: 3-34 klbf  
RPM: 129-188  
GPM: 1165-1179  
SPP: 1253-1895 psi

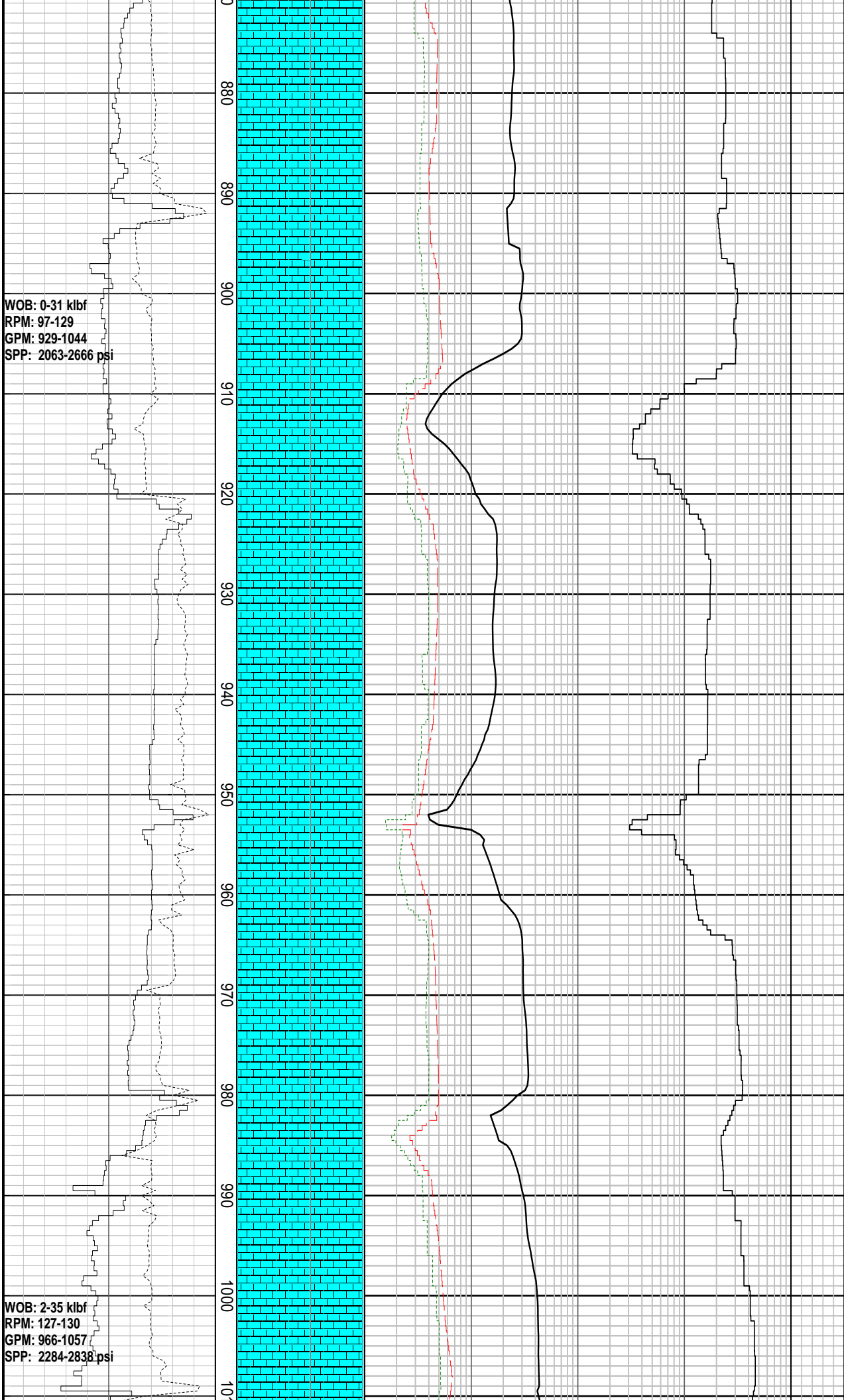
WOB: 1-26 klbf  
RPM: 103-152  
GPM: 1161-1179  
SPP: 1268-1928 psi

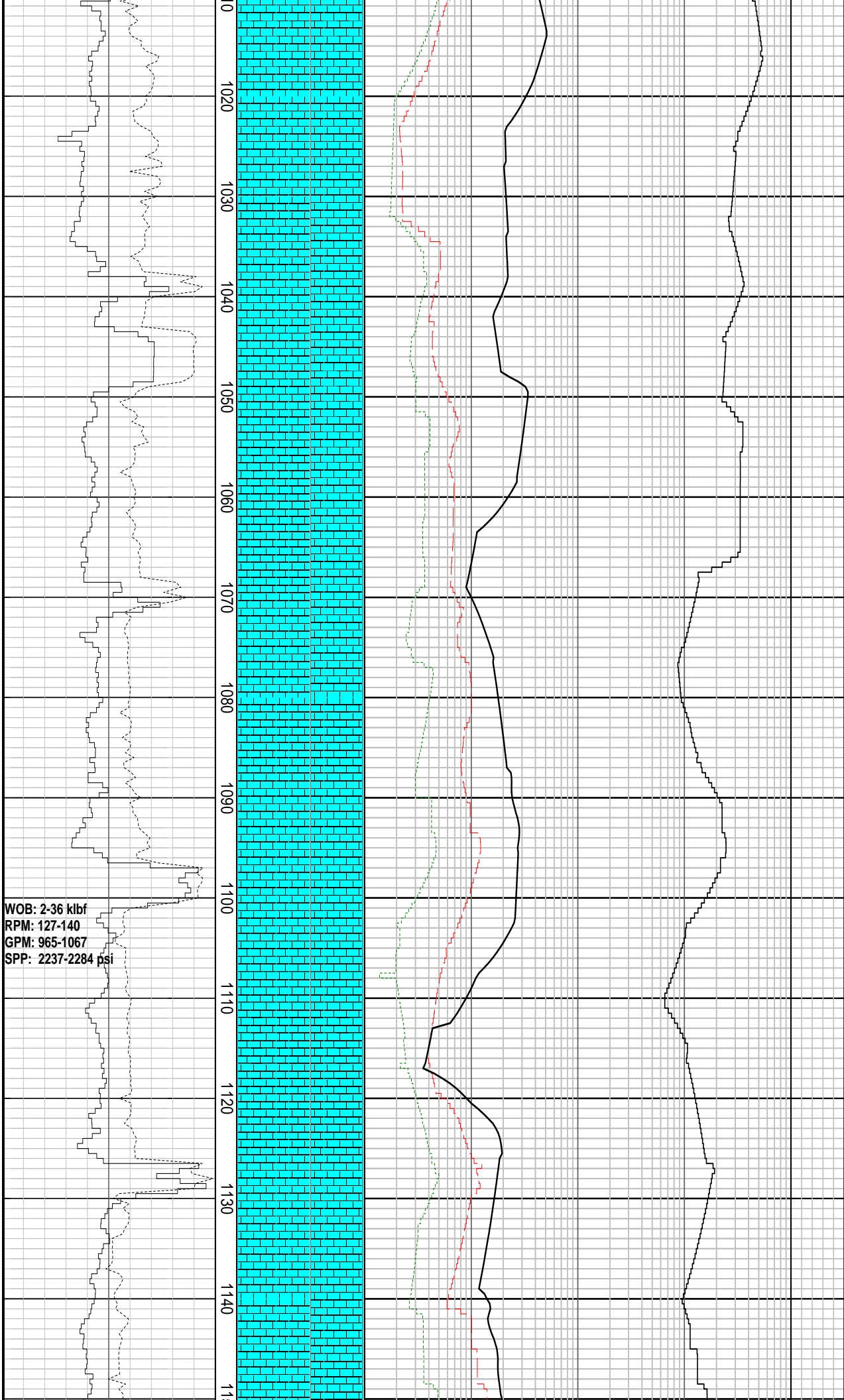
Drill with seawater & Hi-Vis sweeps.  
Returns to seabed 97.0m - 755.0m

MD: 651.66 m	Azi: 355.43°
TVD: 651.6 m	Incl: 0.44°

Drill with seawater & Hi-Vis sweeps.  
Returns to seabed 97.0m - 755.0m







CLCLT: lt m gy, v sft-sft, amor-sbbiky, disp, tr vf lse qtz grs

MD: 1020.40 m    Azi: 177.48°  
TVD: 1016.0 m    Incl: 20.88°

CLCLT: lt m gy, v sft-sft, amor-sbbiky, disp, tr vf lse qtz grs

MD: 1050.8 m    Azi: 176.64°  
TVD: 1043.4 m    Incl: 24.28°

CLCLT: lt m gy, v sft-sft, amor-sbbiky, disp, tr vf lse qtz grs

MD: 1078.64 m    Azi: 178.42°  
TVD: 1069.30 m    Incl: 25.70°

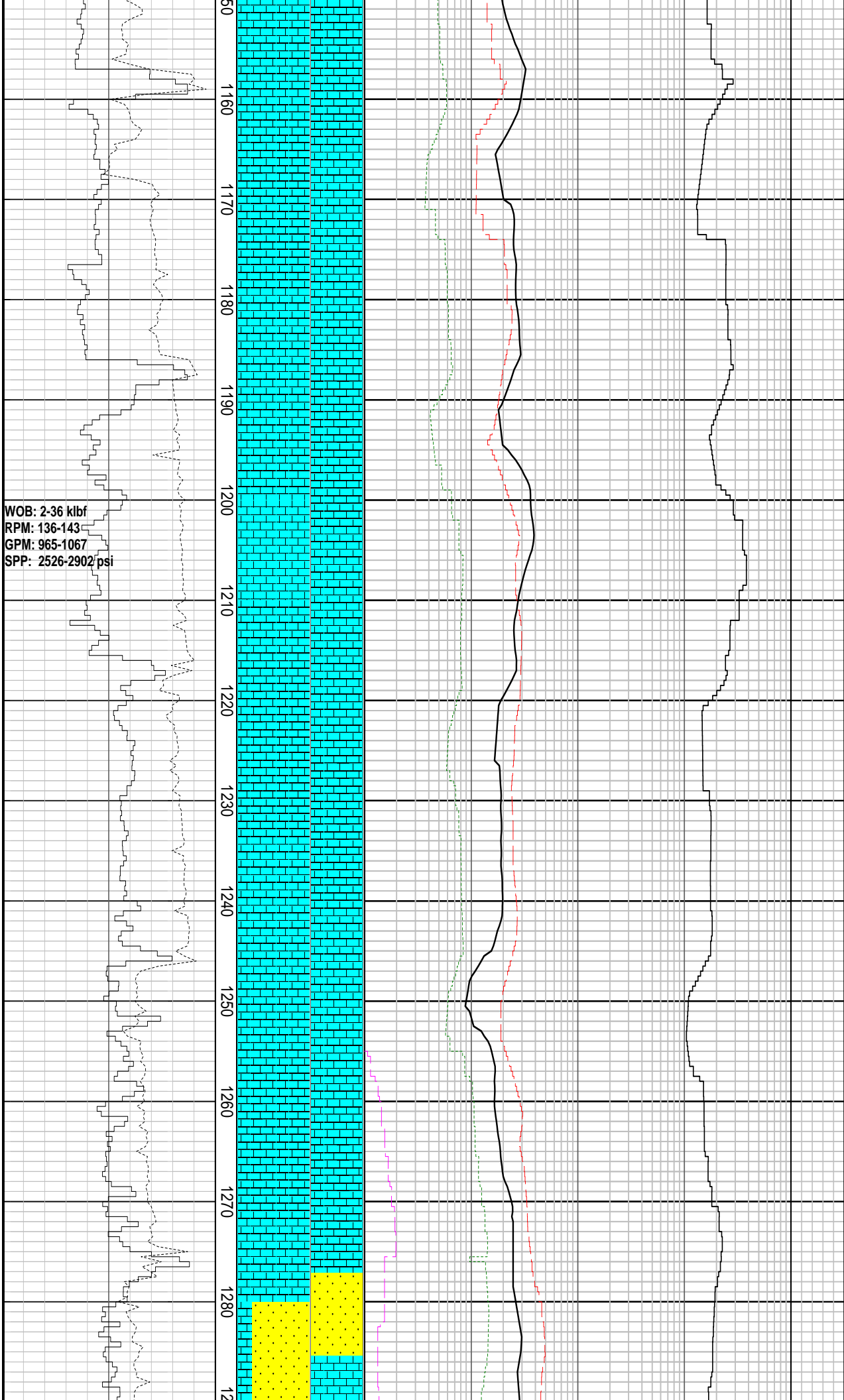
CLCLT: lt m gy, occ wh, v sft-sft, amor-sbbiky, disp, tr glauc, tr carb spks, tr vf lse qtz grs

MD: 1108.28 m    Azi: 180.79°  
TVD: 1095.9 m    Incl: 26.85°

CLCLT: lt m gy, occ wh, v sft-sft, amor-sbbiky, disp, tr glauc, tr carb spks, tr vf lse qtz grs

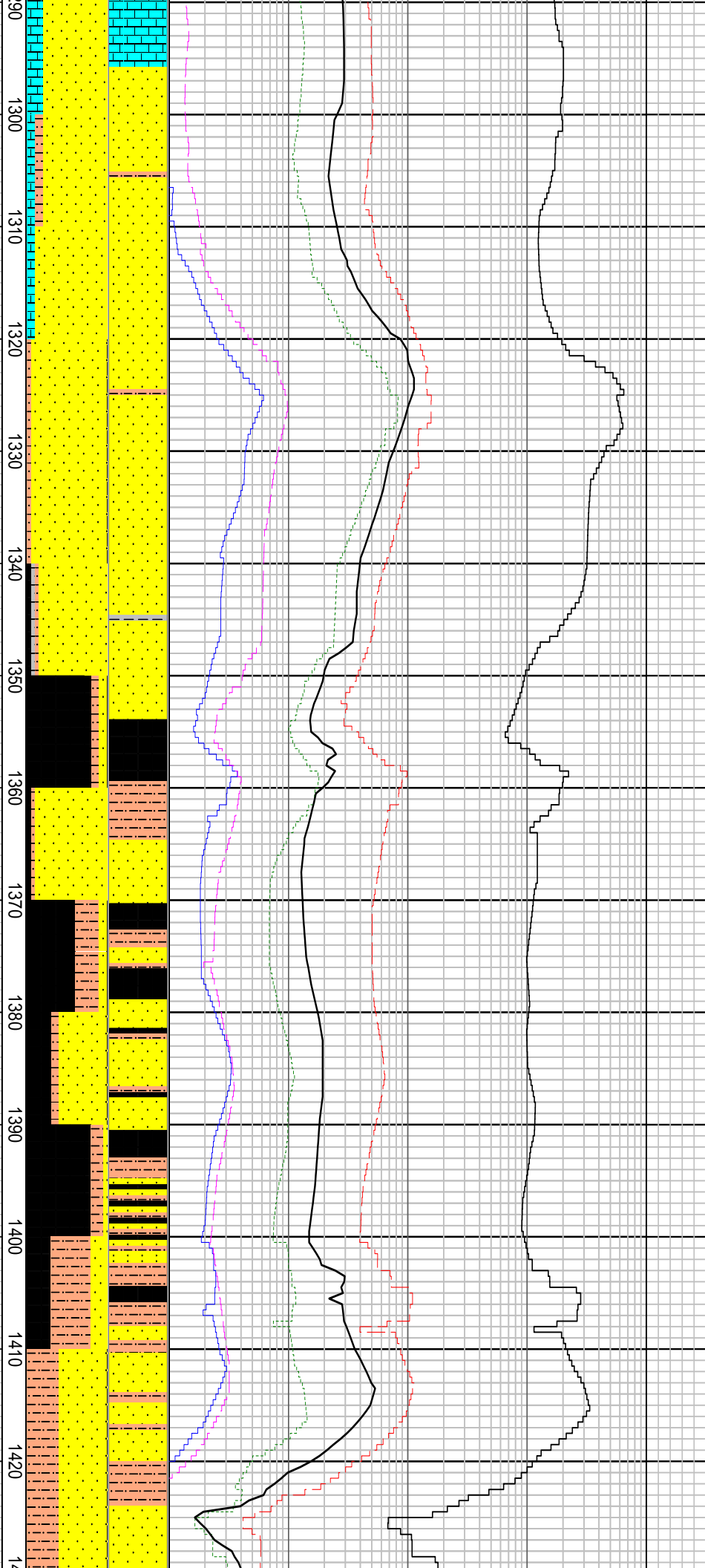
MD: 1137.39 m    Azi: 182.43°  
TVD: 1121.8 m    Incl: 27.64°





WOB: 7-37 klbf  
RPM: 123-155  
GPM: 990-1053  
SPP: 1890-2890 psi

WOB: 2-38 klbf  
RPM: 121-152  
GPM: 838-1126  
SPP: 1981-3524 psi



SST: lse, wh-v lt gy,clr-trnsl grs, occ opq, v f-m, dom f, mod srt, sbang-rndd, qtz w/ mnr fspr & lit, rr agg cmt w/ hd blk-hem min, hd, mnr v crs qtz grs,sbrndd-rndd, tr

MD: 1315.16m Azi: 187.70°  
TVD: 1276.4 m Incl: 31.09°

SLTST: dk brn gy, frm-mod hd, argl, slily carb, tr pyr

MD: 1344.99m Azi: 187.53°  
TVD: 1302.70 m Incl: 31.21°

COAL: blk, mod dull, hd, blkly

SLTST: dk brn gy, frm-mod hd, argl, slily carb

MD: 1374.68m Azi: 184.92°  
TVD: 1327.4 m Incl: 30.42°

SST: lse, wh-v lt gy, clr-trnsl grs, occ opq, v f-m, dom f, mod srt, sbang-rndd, qtz w/ mnr fspr & lit, mnr v crs qtz grs, fr inf por, no shw

COAL: blk, frm, grd to carb Slstst

MD: 1404.59m Azi: 183.00°  
TVD: 1353.3 m Incl: 30.04°

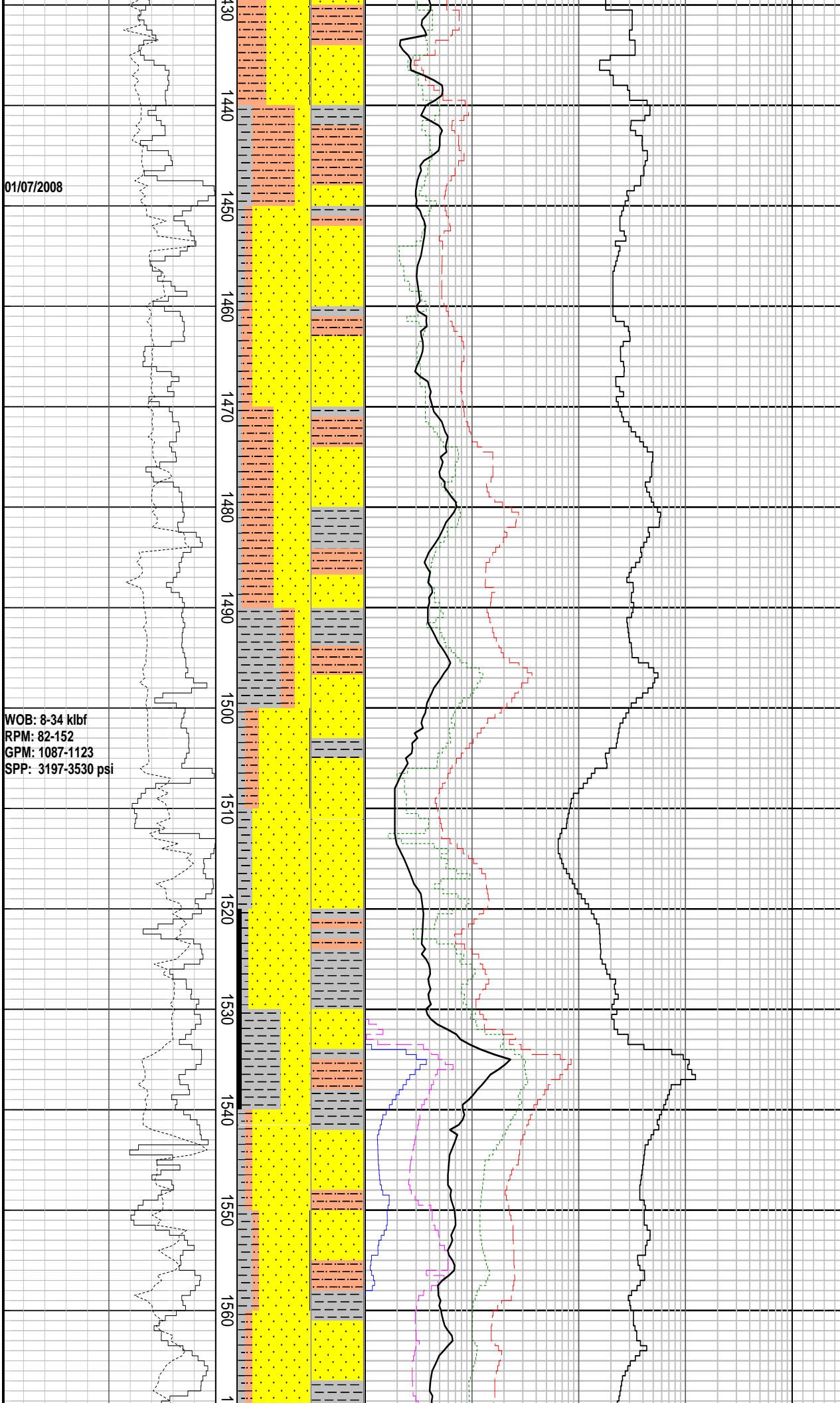
SST: lse, wh-v lt gy, clr-trnsl grs, occ opq, v f-m, dom f, mod srt, sbang-rndd, qtz w/ mnr fspr & lit, mnr v crs qtz grs, fr inf por, no shw

MW: 12.00 ppg FV: 78  
PV: 37 YP: 37  
Gels: 15/20/-  
O/W:65.9/34.1

SLTST: dk brn av. sft - frm. blkv.

01/07/2008

WOB: 8-34 klbf  
RPM: 82-152  
GPM: 1087-1123  
SPP: 3197-3530 psi



sg, cr, argl, silly carb, tr pyr

MD: 1433.94m Azi: 182.29°  
TVD: 1378.5 m Incl: 31.67°

CLYST: wh - lt gy, v sft - sft, amor -  
sbbiky, disp

SST: lse qtz gr, wh, trnspl-trnspl, vf-v  
crs, pred f-m, hd-v hd, ang-rndd, prly  
srt, fr inf por, no shw

MD: 1463.79m Azi: 181.20°  
TVD: 1404.0 m Incl: 30.65°

SLTST: dk brn gy, sft-frm,  
biky-sbbiky, argl, silly carb, tr pyr

CLYST: wh-lt gy, v sft-sft,  
amor-sbbiky, disp

SST: lse qtz gr, wh, trnspl-trnspl, vf-v  
crs, pred f-m, hd-v hd, ang-rndd, prly  
srt, fr inf por, no shw

MD: 1493.62m Azi: 180.72°  
TVD: 1429.80 m Incl: 30.04°

CLYST: wh-lt gy, v sft-sft,  
amor-sbbiky, disp

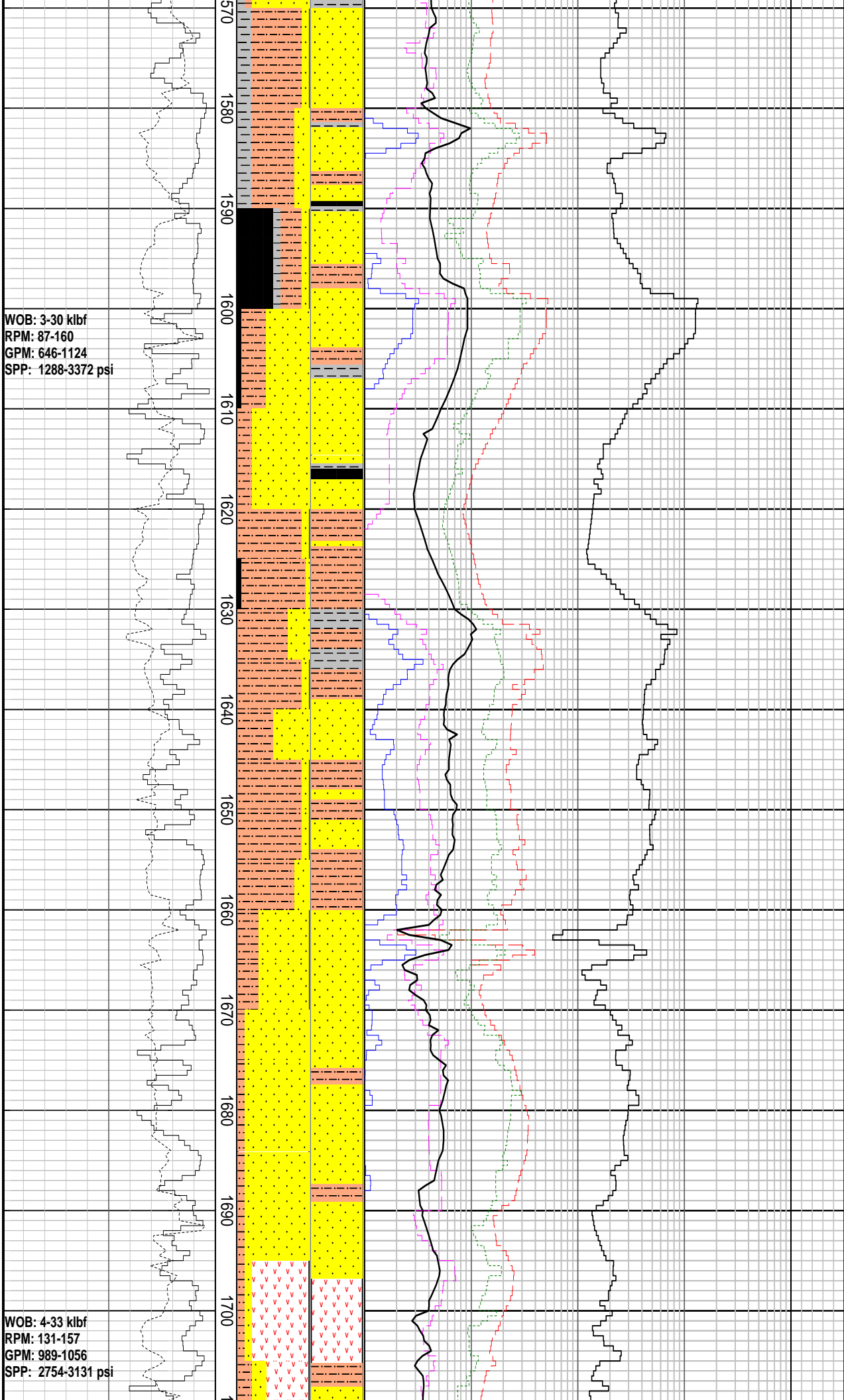
SST: lse qtz grs, wh-v lt gy, cl-trnspl,  
occ opq, vf-v crs, rndd-sbrndd, ang  
i/p, sbsph-sph, mod srt, tr pyr nod, fr  
inf por, no show

MD: 1523.11m Azi: 181.58°  
TVD: 1455.36 m Incl: 30.08°

SLTST: m dk gy-dk gy, sft-frm, sbbiky  
argl, carb i/p

MD: 1553.11m Azi: 181.81°  
TVD: 1481.2 m Incl: 30.38°

SST: lse qtz grs, wh-v lt gy, cl-trnspl,  
occ opq, vf-v crs, rndd-sbrndd, ang  
i/p, sbsph-sph, mod srt, tr pyr nod, fr  
inf por, no show



WOB: 3-30 klbf  
RPM: 87-160  
GPM: 646-1124  
SPP: 1288-3372 psi

WOB: 4-33 klbf  
RPM: 131-157  
GPM: 989-1056  
SPP: 2754-3131 psi

MD: 1583.05m Azi: 183.44°  
TVD: 1507.0 m Incl: 30.31°

SLTST: m gy-brnsh gy, fri-mod frm, amor-sbbiky, com argl mtrx, tr micrxl pyr, mnr carb frag & lam, grd to argl Sltst

MD: 1612.84m Azi: 184.08°  
TVD: 1532.8 m Incl: 30.34°

COAL: blk-brnsh blk, frm, blkgy-sbbiky erthy-sbvit lus, brit

CLYST: m gy-m dk gy, mod frm, amor-sbbiky, mnr qtz slt, tr carb frag, non calc

SLTST: m gy-brnsh gy, fri-mod frm, amor-sbbiky, com argl mtrx, tr micrxl pyr, mnr carb frag & lam, grd to argl Sltst

MD: 1642.12m Azi: 183.53°  
TVD: 1558.0 m Incl: 30.48°

SST: qtz, wh-v lt gy, dom lse, tr sft, m-v crs, pred crs, mod srt, ang-sbang mnr sbrndd, low-mod spsh, tr sft agg w/ argl mtrx, tr intgran pyr cmt, tr pyr grs, gd inf por, no shws

MD: 1671.81m Azi: 182.75°  
TVD: 1583.60 m Incl: 30.16°

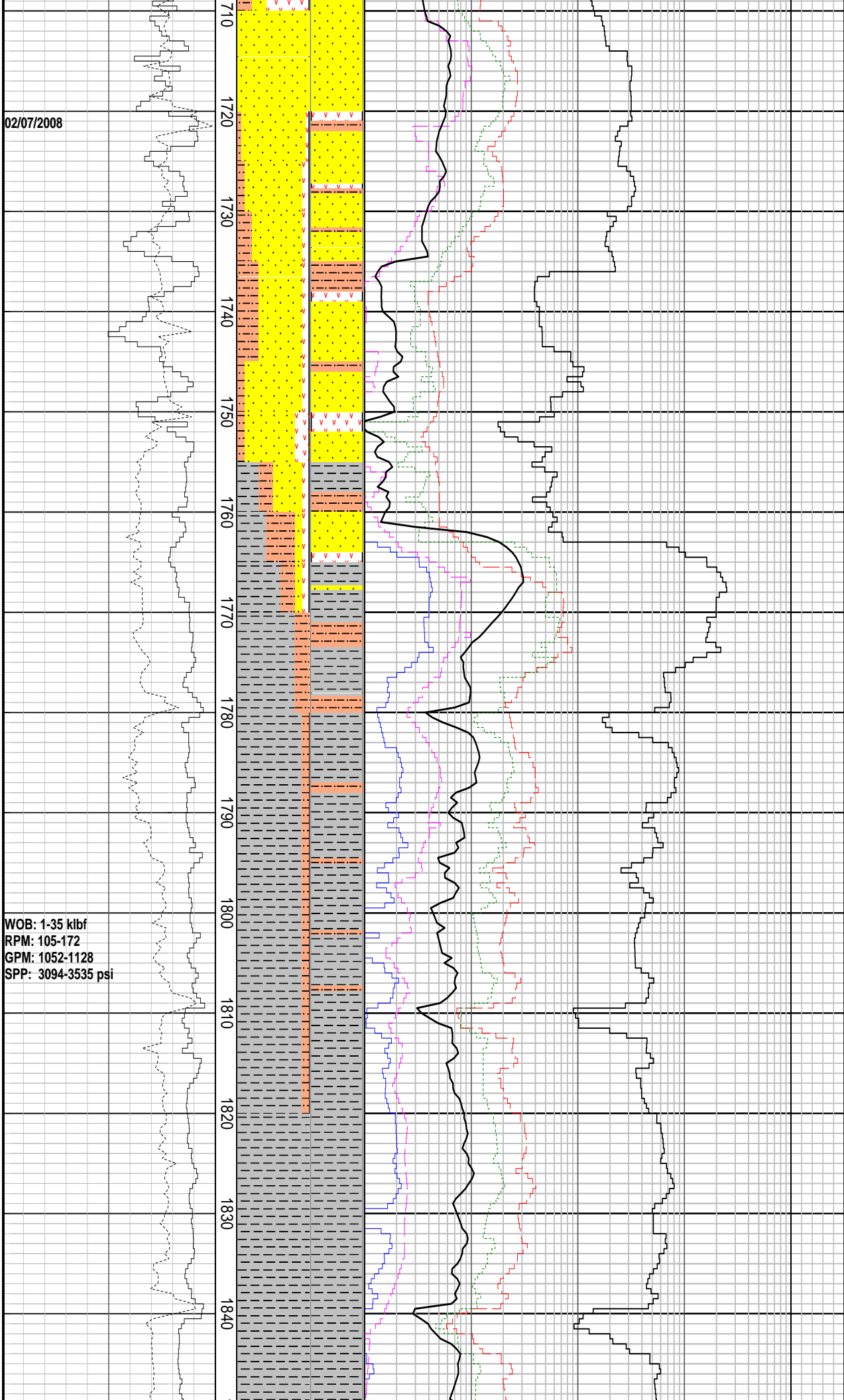
MW: 12.10 ppg FV: 78  
PV: 35 YP: 36  
Gels: 14/19/-  
OW: 67.5/32.5

VOLC: off wh, lt gy-lt gn, speck gy-dk gy, sft-mod frm, occ v sft, sbbiky-blky

MD: 1701.38m Azi: 181.97°  
TVD: 1609.20 m Incl: 29.96°

02/07/2008

WOB: 1-35 klbf  
RPM: 105-172  
GPM: 1052-1128  
SPP: 3094-3535 psi



SST: qtz, wh-v lt gy, trnsp-trnsl, dom lse, tr sft, m-v crs, pred crs, mod srt, ang-sbang, mnr sbrnnd, low-mod spsh, tr pyr grs, gd inf por, no shw

MD: 1730.84m Azi: 182.20°  
TVD: 1634.70m Incl: 30.49°

VOLC: off wh, lt gy-lt gn, speck gy-dk gy, sft-mod frm, occ v sft, sbbiky-blky

MD: 1760.64m Azi: 183.16°  
TVD: 1660.40m Incl: 30.44°

MD: 1790.34m Azi: 183.49°  
TVD: 1686.10m Incl: 29.76°

CLYST: m-dk gy, dk brnsh gy, mod frm-frm, blky, occ lams, tr pyr, grd to Sltst

MD: 1820.04m Azi: 183.26°  
TVD: 1711.90m Incl: 28.44°

CLYST: m-dk gy, dk brnsh gy, occ lt gy, mod frm-frm, occ sft, blky, occ lams, tr pyr, grd to Sltst



MD: 1849.86m Azi: 182.80°  
TVD: 1738.10m Incl: 28.05°

SST: lse qtz grs, wh-v lt gy,  
trnsl-trnsp, hd, vf-m, mod srt,  
sbang-rndd, fr inf por, no shw

MD: 1879.39m Azi: 182.54°  
TVD: 1764.10m Incl: 28.44°

SST: lse qtz grs, wh-v lt gy,  
trnsl-trnsp, hd, vf-m, mod srt,  
sbang-rndd, fr inf por, no shw

MD: 1909.08m Azi: 181.91°  
TVD: 1790.20m Incl: 29.18°

CLYST: m-dk gy, dk brnsh gy, occ lt  
gy, mod frm-frm, occ sft, blk, occ  
lams, tr pyr, grd to SLTST

MD: 1938.97m Azi: 182.37°  
TVD: 1816.2m Incl: 29.25°

CLYST: m gy-m lt gy, sft-frm i/p, blk,  
tr carb spks, tr pyr nod, grd to Slt  
Clyst

SST: lse qtz grs, wh-v lt gy,  
trnsp-trnsl, occ opq, hd-v hd, vf-f, crs  
i/p, sbang-rndd, sbsph i/p, mod srt, fr  
inf por, no shw

MD: 1968.51m Azi: 181.63°  
TVD: 1842.2m Incl: 27.81°

COAL: blk, frm, blk-sbblk,  
erthy-sbvit lus, brit

